

MLS Area 4

Residential Statistics



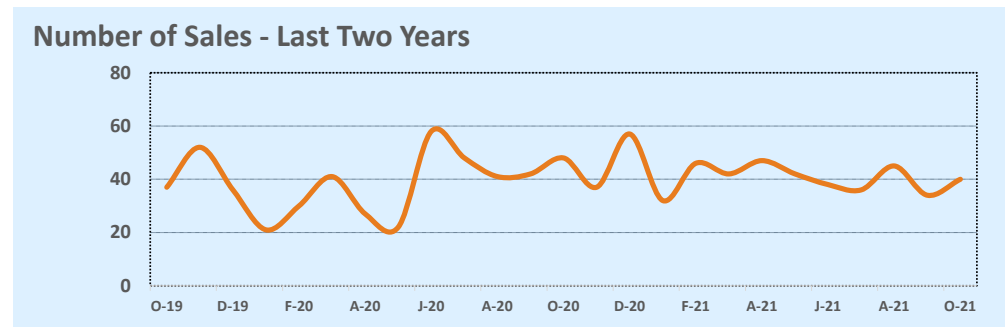
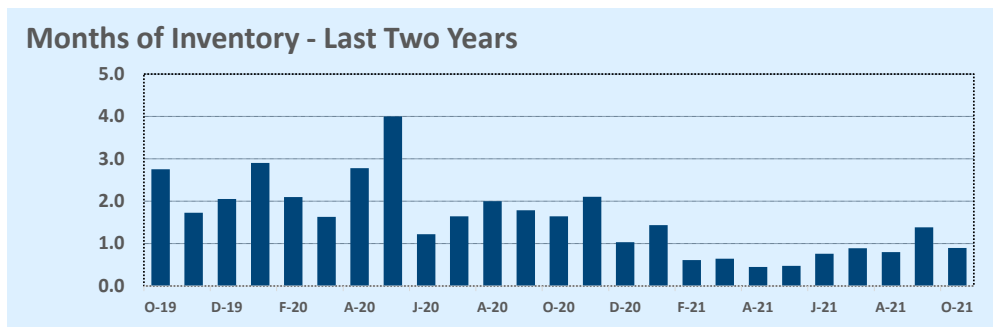
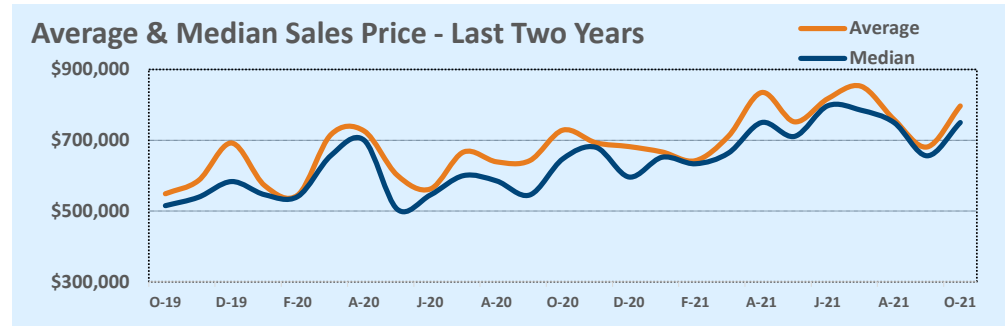
October 2021

Listings	This Month			Year-to-Date		
	Oct 2021	Oct 2020	Change	2021	2020	Change
Single Family Sales	26	38	-31.6%	273	267	+2.2%
Condo/TH Sales	14	10	+40.0%	129	111	+16.2%
Total Sales	40	48	-16.7%	402	378	+6.3%
New Homes Only	2	2	--	24	34	-29.4%
Resale Only	38	46	-17.4%	378	344	+9.9%
Sales Volume	\$31,874,693	\$34,973,399	-8.9%	\$302,503,440	\$243,300,939	+24.3%
New Listings	38	52	-26.9%	442	495	-10.7%
Pending	--	--	--	--	--	--
Withdrawn	3	4	-25.0%	16	30	-46.7%
Expired	3	4	-25.0%	16	30	-46.7%
Months of Inventory	0.9	1.6	-45.3%	N/A	N/A	--

Price Range	This Month			Year-to-Date		
	New	Sales	DOM	New	Sales	DOM
\$149,999 or under	--	--	--	--	--	--
\$150,000- \$199,999	--	--	--	8	12	53
\$200,000- \$249,999	3	1	2	17	17	38
\$250,000- \$299,999	6	3	7	20	14	23
\$300,000- \$349,999	--	2	7	5	7	9
\$350,000- \$399,999	--	--	--	8	5	39
\$400,000- \$449,999	--	1	135	9	7	88
\$450,000- \$499,999	2	--	--	17	12	24
\$500,000- \$549,999	3	--	--	32	25	21
\$550,000- \$599,999	2	6	19	37	27	51
\$600,000- \$699,999	3	5	8	65	61	22
\$700,000- \$799,999	4	5	11	61	66	22
\$800,000- \$899,999	--	4	13	31	46	19
\$900,000- \$999,999	1	2	6	37	28	12
\$1M - \$1.99M	12	10	33	87	74	57
\$2M - \$2.99M	2	1	2	7	1	2
\$3M+	--	--	--	1	--	--
Totals	38	40	19	442	402	32

Average	This Month			Year-to-Date		
	Oct 2021	Oct 2020	Change	2021	2020	Change
List Price	\$785,406	\$729,600	+7.6%	\$728,034	\$648,713	+12.2%
List Price/SqFt	\$481	\$428	+12.5%	\$463	\$393	+17.8%
Sold Price	\$796,867	\$728,612	+9.4%	\$752,496	\$643,653	+16.9%
Sold Price/SqFt	\$489	\$429	+14.1%	\$481	\$391	+23.0%
Sold Price / Orig LP	101.7%	100.1%	+1.5%	103.8%	99.4%	+4.4%
Days on Market	19	45	-57.4%	32	43	-25.2%

Median	This Month			Year-to-Date		
	Oct 2021	Oct 2020	Change	2021	2020	Change
List Price	\$697,200	\$649,250	+7.4%	\$675,000	\$584,500	+15.5%
List Price/SqFt	\$476	\$436	+9.3%	\$457	\$389	+17.5%
Sold Price	\$750,075	\$647,500	+15.8%	\$725,000	\$585,000	+23.9%
Sold Price/SqFt	\$490	\$435	+12.8%	\$470	\$381	+23.4%
Sold Price / Orig LP	100.0%	100.0%	+0.0%	100.4%	99.6%	+0.9%
Days on Market	8	15	-44.8%	7	13	-46.2%



Based on information from the Austin Board of REALTORS® (alternatively, from ACTRIS). Neither the Board nor ACTRIS guarantees or is in any way responsible for its accuracy. The Austin Board of REALTORS®, ACTRIS and their affiliates provide the MLS and all content therein "AS IS" and without any warranty, express or implied. Data maintained by the Board or ACTRIS may not reflect all real estate activity in the market.